



A GREATER MEASURE OF CONFIDENCE

Product(s):

Software: TestPoint

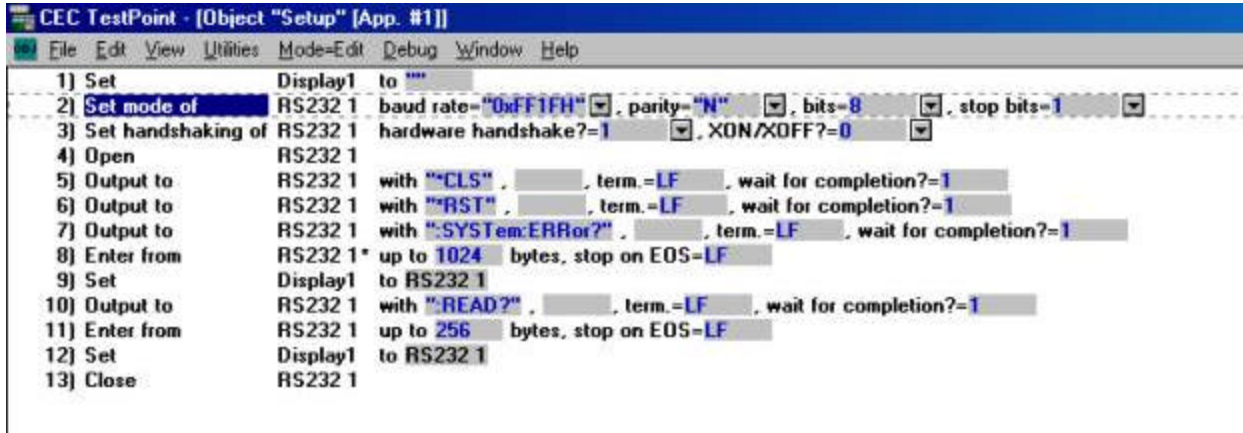
Question: How do I set higher baud rates for the COM (RS-232) object in TestPoint?

Answer: The baud rate selections for the COM object in TestPoint range from 300 baud to 19200 baud. To configure the COM object for a baud rate above 19.2kbaud, it is necessary to write a hexadecimal programming code in the baud rate field of the "Set mode of" action of the COM object. You will need to follow the programming code with the letter "H" to indicate hexadecimal. A table of programming codes is shown below:

BAUD RATE	CODE
110	0xFF10
300	0xFF11
600	0xFF12
1200	0xFF13
2400	0xFF14
4800	0xFF15
9600	0xFF16
14400	0xFF17
19200	0xFF18
38400	0xFF1B
56000	0xFF1F
128000	0xFF23
256000	0xFF27

As you will notice, for rates above 38.4kbaud, the standard baud rates in Windows do not match up with the baud rates shown in the above table. For instance, the exact values of 57.6kbaud and 115.2kbaud are not present in the table above. However, if you use the programming code that corresponds to the nearest baud rate, communication can be successfully established. As an example, if you wish to set the baud rate

to 57.6kbaud, use the programming code 0xFF1F for 56kbaud. The screenshot below illustrates this example:



©Copyright 2003, Keithley Instruments, Inc.